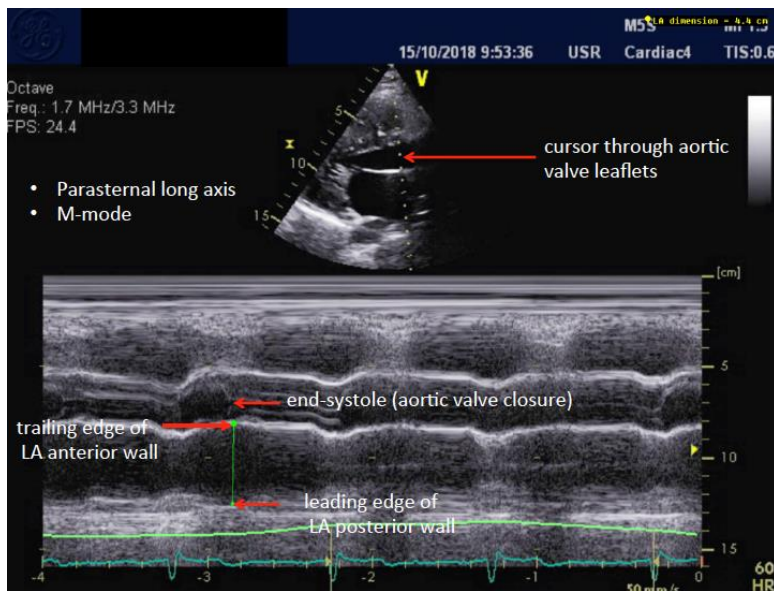


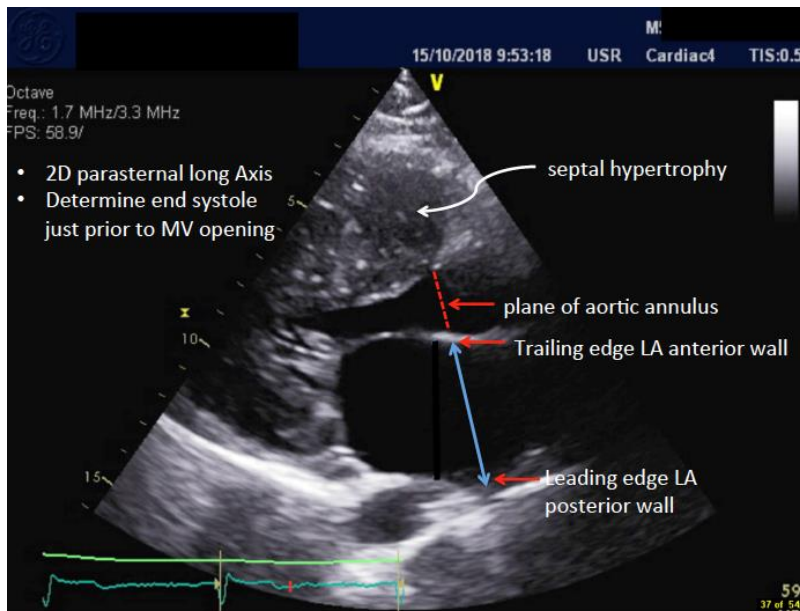
Determination of left atrial diameter for PRIMaCY study patients

Option A:



1. Locate parasternal long axis M-mode image of aortic valve and left atrium.
2. Measure LA diameter at end systole (as determined by aortic valve closure) by measuring from LA anterior wall (trailing edge) to LA posterior wall (leading edge)

Option B:



1. Locate parasternal long axis 2D image of aortic valve and left atrium.
2. Measure LA diameter at end systole (as determined by frame just prior to mitral valve opening.) Measure in the same plane as Aortic annulus, and at same level.
3. Measure from LA anterior wall (trailing edge) to LA posterior wall (leading edge)